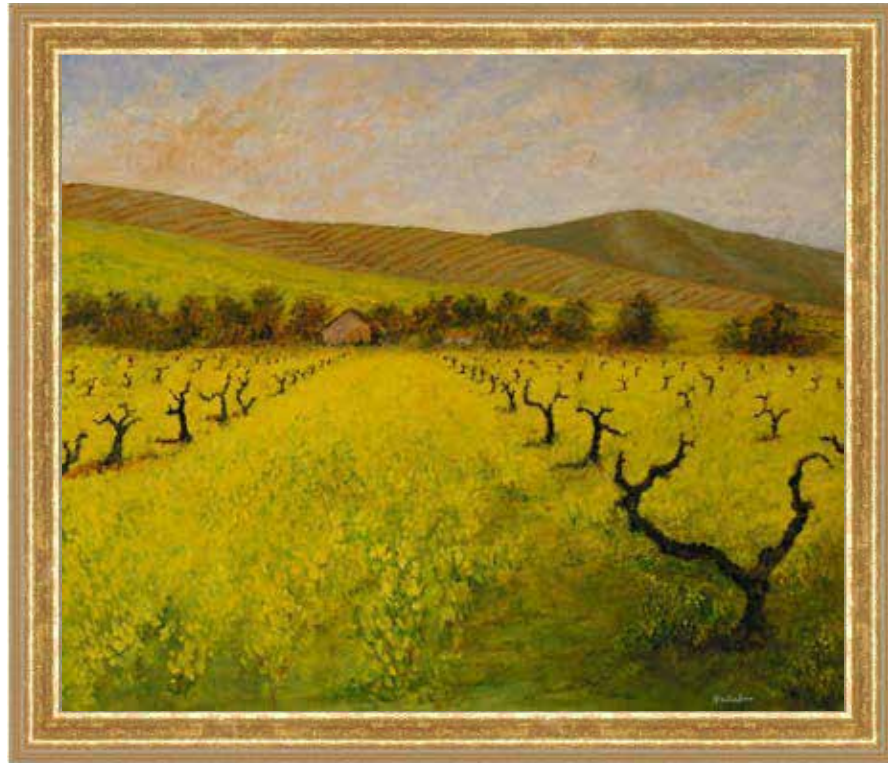


MUSTARD WITH GRAY BARN

Guglielmo Bertetta



The composition of this painting is based on a vintage black and white photograph. The vineyard was established by one of the early Italian growers settling in the Kenwood area. It was nurtured by the next generations and produces a consistently robust Zinfandel. A vineyard remains today, however, the splendor of the old vines bathed in a refreshing growth of mustard can no longer be seen from this point of view.

“Mustard With Gray Barn”
Giclee

24 x 30 unframed	\$500.00
16 x 20 unframed	\$350.00
8 x 10 framed	\$105.00
Custom Sizes Available	

Please contact the marketplace at (707) 537-3810 ext 128
or send an e-mail to info@ledson.com to purchase a painting